



# 2cureX

**Future cancer patients will be treated individually**

**Redeye Fight Cancer 2021  
21. January 2021, Stockholm**

**Ole Thastrup CEO 2cureX**

# Agenda Topics

---

- 2cureX is defined by a strong foundation
- The IndiTreat<sup>®</sup> test – addressing an unmet medical need
- Status on clinical trial in colorectal cancer (CRC)
- Patient and health economic consequences of using IndiTreat<sup>®</sup>
- Strong commercial roadmap 2021-2023
- Strengthening the executive team
- An attractive investment-case



Ole Thastrup  
CEO & Founder

Contact:

Ole Thastrup, CEO  
[ot@2curex.com](mailto:ot@2curex.com)  
[www.2curex.com](http://www.2curex.com)



# 2cureX is defined by a strong foundation

**2007**

2cureX spun-out from Carlsberg Research Center (2007)



**2015**

2cureX GmbH established in Hamburg



**2017**

Clinical trial in Colorectal Cancer initiated

**2018-2019**

Management team expanded with CBO, CFO and CMO



**2018-2020**

2<sup>nd</sup> family of patents issued



**2020**

Last patient enrolled in Colorectal Cancer trial

**2020**

Last patient treated in Colorectal Cancer trial

**2021**

Management team strengthened with new CEO

**2009**

1<sup>st</sup> family of patents issued



**2017**

2cureX listed on Nasdaq First Nord Growth Market (Stockholm)



**2018**

Clinical trials in Ovarian and Pancreatic Cancer initiated

**2019**

Capital raise through a Rights Issue



**2020**

Capital raise through a Directed Issue



**2020**

Commercial launch of IndiTreat-CRC at ESMO



**2020 -**

Commercialization

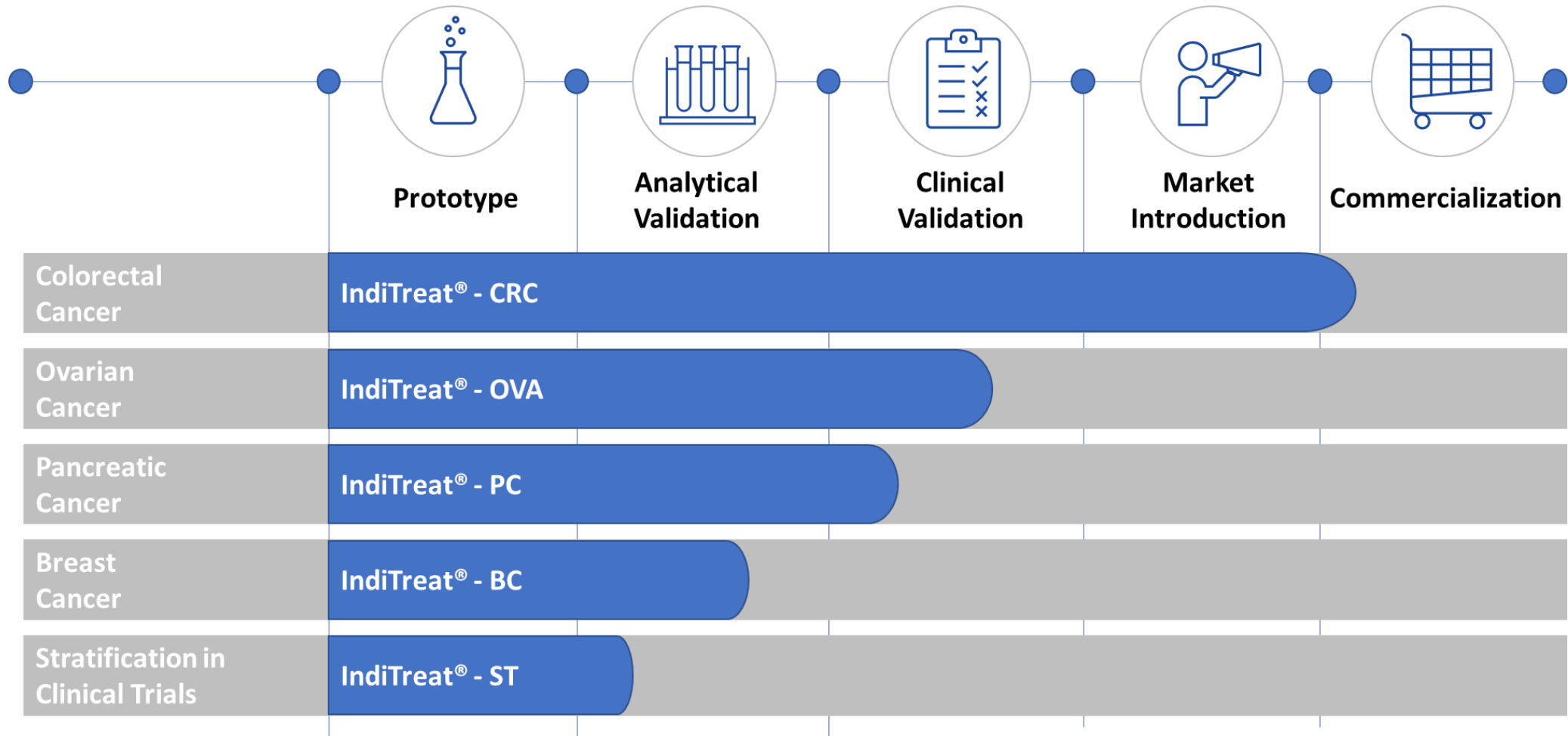


Because patients are individuals





# IndiTreat<sup>®</sup> product pipeline addresses high profile cancer areas



# IndiTreat-guided treatment in third-line therapy

Metastatic colorectal cancer (mCRC)



**One patient tested towards a panel of off-label drugs**

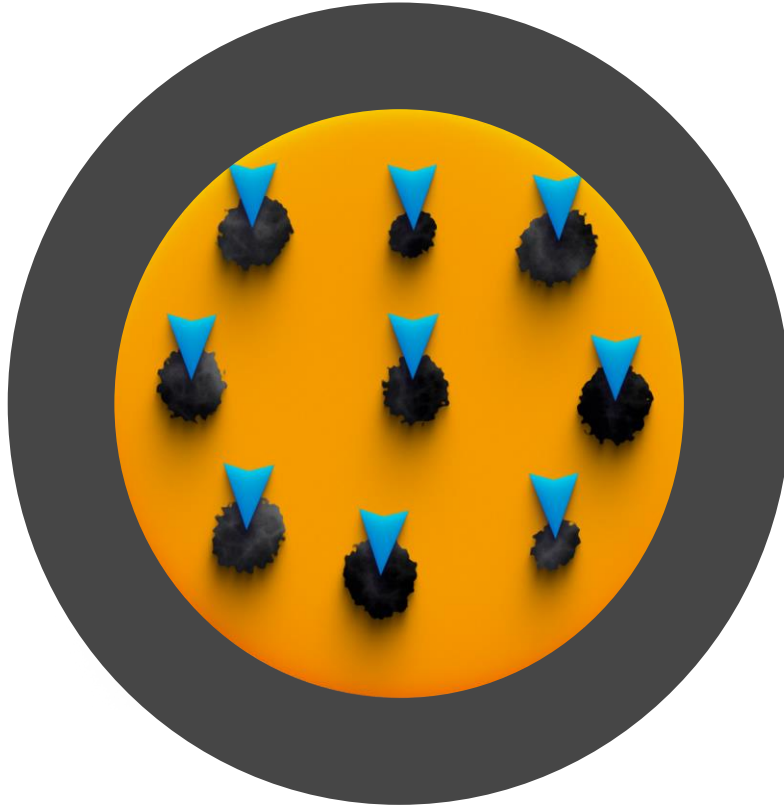


**One treatment identified as effective**

# IndiTreat-guided treatment in first-line therapy

---

Metastatic colorectal cancer (mCRC)

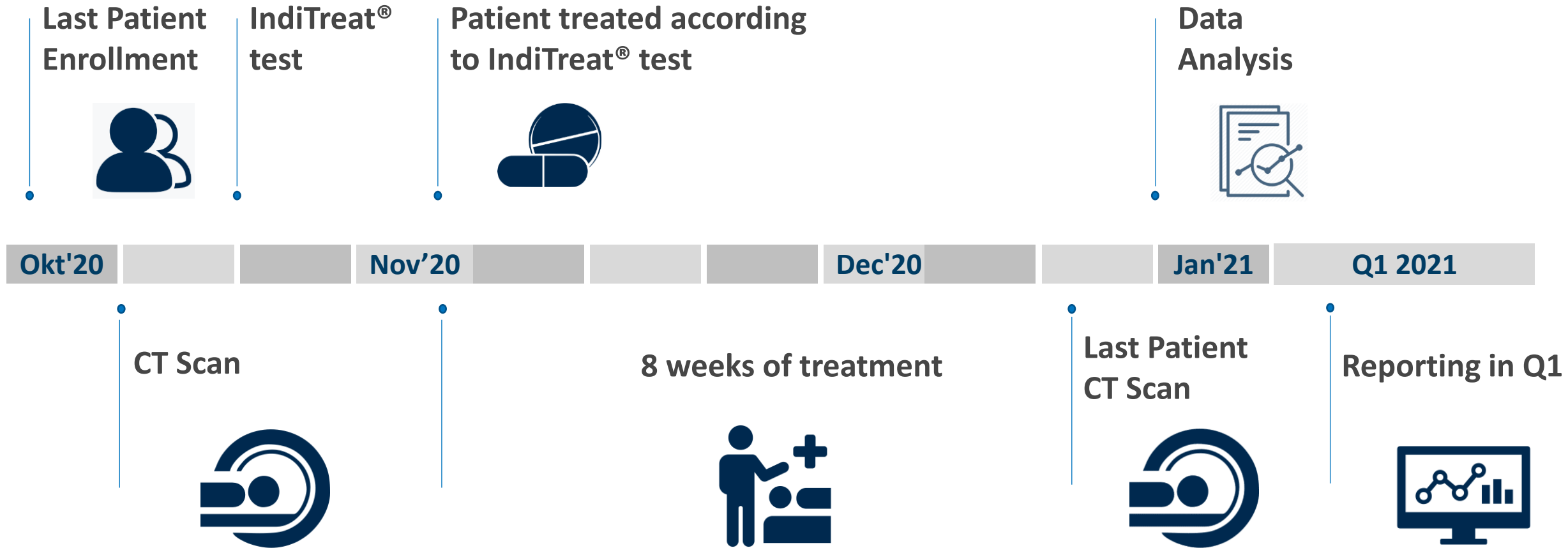


Several patients tested towards  
one standard treatment



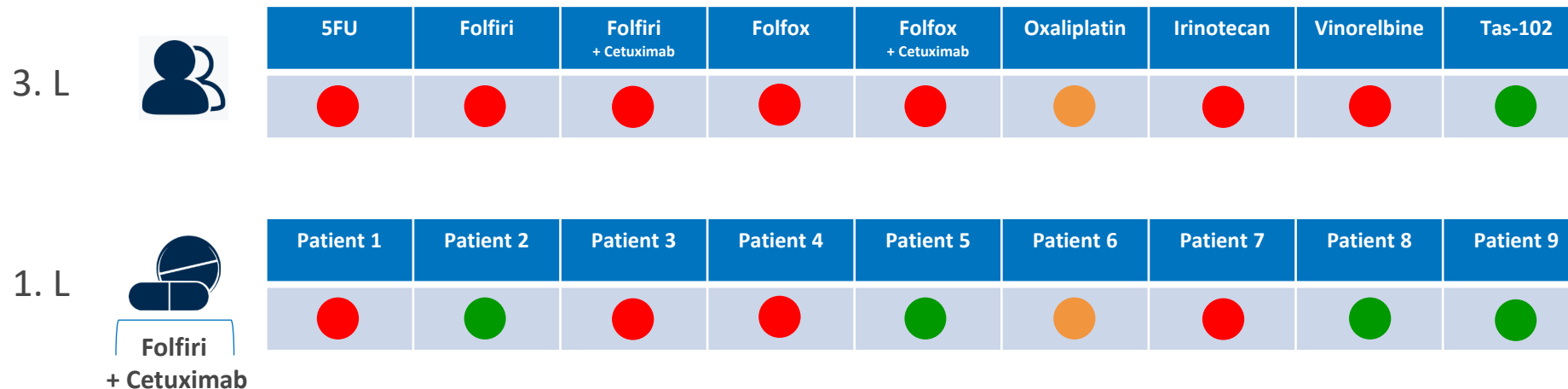
55% of patients show resistance  
toward specific standard treatment

# Clinical trial on track - Last patient treated





# Patient data presenting 3. line and 1. line treatment



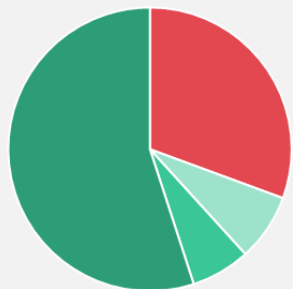
Positive outcome of clinical study will have the following impact on treatment of mCRC:

- Immediate implementation in **third-line treatment** using standard and off-label treatments
- Immediate implementation in **first-line treatment** using guideline based standard treatments

# IndiTreat® delivers patient and health economic benefits

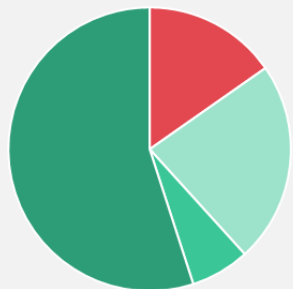
IndiTreat® increases response rate and decreases time to response for colon cancer patients

Today / Doctors choice



■ Responders 1 line

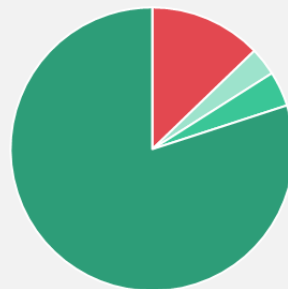
IndiTreat® guides  
3. Line treatment



■ Responders 2 line

■ Responders 3 line

IndiTreat® guides 1. line  
treatment only

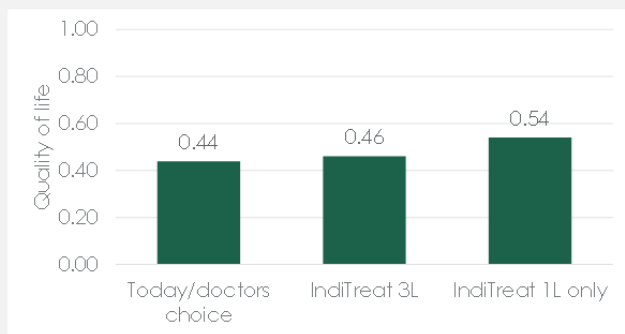


■ Non-responders

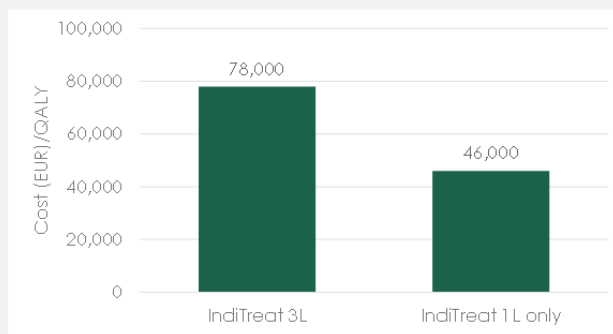
## Patient Benefit

- Increased treatment efficacy
- Avoiding drug resistance

Using IndiTreat® increases the average quality of life



The ICER<sup>1</sup> shows that IndiTreat® is value for money, especially when used in first line



1) Incremental cost-effectiveness ratio.

## Health Economic Benefit

- Increased quality of life
- Improved Incremental cost-effectiveness ratio (ICER)

# Strong Commercial Roadmap 2021 - 2023

---

	2021	2022	2023
<b>Product Focus</b>	Colorectal	Colorectal, Ovarian, Pancreatic	Colorectal, Ovarian, Pancreatic, Breast
<b>Market Focus</b>	Nordics	EU markets + UK	EU markets + UK + Selected Asian markets
<b>Target Customers</b>	Key cancer centers	Larger Regional Hospitals	General Hospitals
<b>Sales Organization</b>	Own sales reps (n=5) IVD distributors	Own sales organization (n=10) IVD distributors	Own sales organization (n=20) Global IVD partner ?
<b>Sales Process</b>	Evaluation deals Early-stage pricing	Commercial Deals	Commercial Deals
<b>Product development</b>	Pancreatic Cancer, Ovarian Cancer, Breast Cancer and Automation	Breast Cancer, Immuno Oncology, Automation	New Cancer Entities

- because cancer patients are individuals

# A Clinical and Commercial partner base is in place

## Group 1 Clinical trials Partners



## Group 3 Patient societies



## Group 5 Patient stratification partners



## Group 2 Academic + Technical Partners

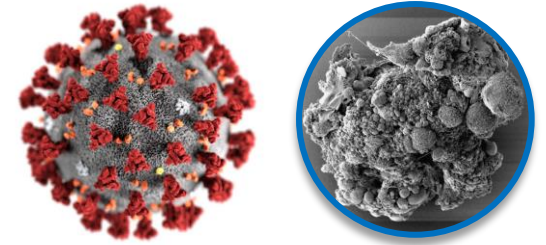


## Group 4 Commercial Partners / Sales Channels



- because cancer patients are individuals

# COVID impacts cancer market dynamics



October 01, 2020 | 2 min read

SAVE

## Sharp declines in new cancer diagnoses observed during COVID-19 pandemic

ADD TOPIC TO EMAIL ALERTS

The number of newly identified patients with six common types of cancer declined significantly.

The drop began soon after the COVID-19 pandemic began, according to data in a research letter published in *JAMA Network Open*.

Mean weekly number of newly identified patients with six common cancer types



JAMA Network **Open**

Research Letter | Oncology

### Changes in the Number of US Patients With Newly Identified Cancer Before and During the Coronavirus Disease 2019 (COVID-19) Pandemic

Harvey W. Kaufman, MD; Zhen Chen, MS; Justin Niles, MA; Yuri Fesko, MD

**Introduction**

In response to the coronavirus disease (COVID-19) pandemic, the American Society of Clinical Oncology recommends, "to conserve health system resources and reduce patient contact with

Author affiliations and article information are listed at the end of this article.

CrossMark

### Fewer cancer diagnoses during the COVID-19 epidemic in the Netherlands

Published Online April 30, 2020  
doi:10.1016/j.annonc.2020.10.1016

The dreadful consequences of coronavirus disease 2019 (COVID-19) put an unprecedented pressure on the health-care systems. The mayhem caused by COVID-19 has brought about substantial changes in cancer diagnosis in the Netherlands.

vh virtual health library

## VHL Regional Portal

Information and Knowledge for Health

Title, abstract, subject

Home / Search / The Impact of Changes in Service Delivery in Patients With Colorectal Cancer During the Initial Phase of the COVID-19 Pandemic.

**The Impact of Changes in Service Delivery in Patients With Colorectal Cancer During the Initial Phase of the COVID-19 Pandemic.**

Kamposioras, Konstantinos; Saunders, Mark; Jonathan Lim, Kok Haw; Marti, Kalena; Anderson, Daniel; Cutting, Mark; McCool, Danielle; Connell, Jacqueline; Simpson, Lilly; Hasan, Jurjees; Braun, Michael; Lavin, Victoria; Mullamitha, Saifee; Barriuso, Jorge.

*Clin Colorectal Cancer*; 2020 Dec 05.

Article in English | MEDLINE | ID: mdl-33384244

Primary study | See in Epistemonikos

Editorial

### COVID-19: global consequences for oncology

As the coronavirus disease 2019 (COVID-19) pandemic escalates and countries struggle to contain the virus, health-care systems are under increasing pressure. Emergency departments and intensive care units are nearing breaking point, and medical resources are being diverted to tackle the crisis. Moreover, conferences are being cancelled, and research trials are grinding to a halt. So what does COVID-19 mean for patients with cancer, their physicians, and the wider oncology discipline?

ongoing research projects are being jeopardised. Limited resources and capacity will force institutions to decide which clinical trials to prioritise and which to suspend. Many institutions, including the Dana Farber Cancer Institute (Boston, MA, USA) are restricting employees' work-related travel, and others such as the Fred Hutchinson Cancer Research Center (Seattle, WA, USA—one of the worst-affected US cities) are implementing mandatory work from home policies. However, not all

For more on the risks of COVID-19 for patients with cancer see <https://www.fredhutch.org/en/news/center-news/2020/03/coronavirus-what-cancer-patients-need-to-know.html>

Oncology Research and Treatment

Research Article

Oncol Res Treat  
DOI: 10.1159/000512935

Received: August 26, 2020  
Accepted: November 5, 2020  
Published online: December 17, 2020

### Decreased Incidence of Oncology Admissions in 75 Helios Hospitals in Germany during the COVID-19 Pandemic

Peter Reichardt<sup>a</sup> Andreas Bollmann<sup>b</sup> Sven Hohenstein<sup>b</sup> Bertram Glass<sup>a</sup> Michael Untch<sup>a</sup> Annette Reichardt<sup>c</sup> Daniel Amrein<sup>a</sup> Ralf Kuhlén<sup>d</sup>

<sup>a</sup>Department of Oncology and Palliative Care, Helios Klinikum Berlin-Buch, Berlin, Germany; <sup>b</sup>Heart Center Leipzig and Leipzig Heart Institute, Leipzig, Germany; <sup>c</sup>Berlin Cancer Institute, Berlin, Germany; <sup>d</sup>Helios Health, Berlin, Germany

# Strengthening the Executive team

---

On 1. February 2021 Fernando Andreu will become the new CEO of 2cureX.

Ole Thastrup will transition into the role of CSO with responsibility for 2cureX's clinical and scientific activities.

Fernando is an international Biotech executive with extensive experience from bringing commercial value into early IVD companies and large international diagnostic companies.



Fernando Andreu  
CEO (from 1. Febr 2021)

*Redeye Interview with  
Fernando Andreu and  
Ole Thastrup on 2<sup>th</sup> of  
February 2021*

## An attractive investment-case

- 2cureX is meeting an urgent medical need in cancer treatment
- 2cureX has introduced the world's first CE-marked and ISO13485 compliant Microtumor test (IndiTreat®)
- Positive results from clinical trial in colorectal cancer influence guide-line based treatment
- 2cureX has a strong clinical pipeline in four major cancers
- IndiTreat® is patent protected in major markets
- 2cureX is strengthening its management and commercial activities

Follow us by signing up  
for News on  
[www.2curex.com](http://www.2curex.com)  
and on:



**Thank you for your attention !**

- because cancer patients are individuals

**2cureX**